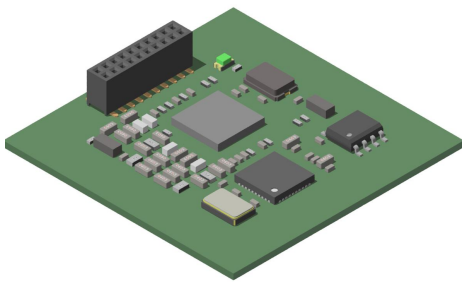
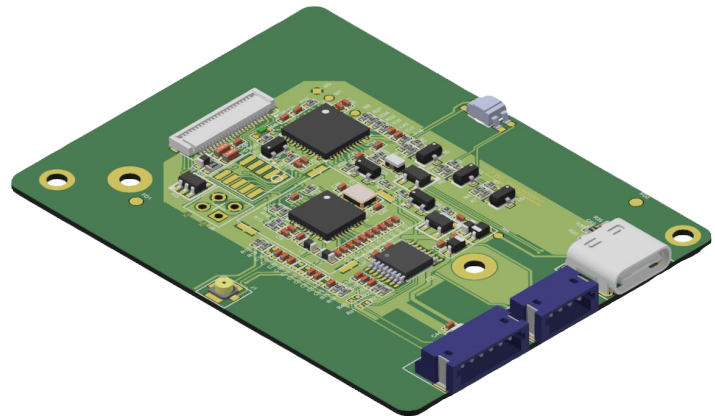


881 READER

Mini



Compact



881



881

AUSFÜHRUNG

- + Low-power RFID/NFC-Leser
- + Unterstützt alle gängigen 13,56-MHz-Protokolle
- + Kompatibel zu allen ddm-Lesegeräten
- + Integrierte Antenne
- + Stecker für externe Antenne
- + Serielle TTL, USB-C, RS232

ABMESSUNGEN

Mini:	35 x 35 x 5,6 mm
Compact:	49 x 64 x 4,5 mm

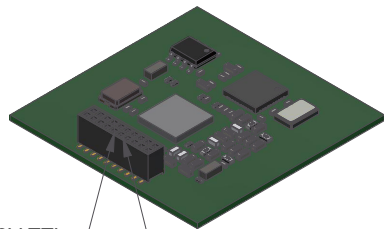
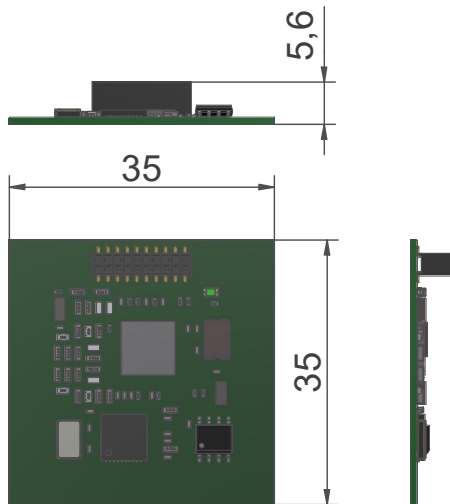
CONSTRUCTION

- + *Low-power RFID/NFC reader*
- + *Supports all common 13.56 MHz protocols*
- + *Compatible to all ddm devices*
- + *Integrated antenna*
- + *Connector for external Antenna*
- + *Serial TTL, USB-C, RS232*

DIMENSIONS

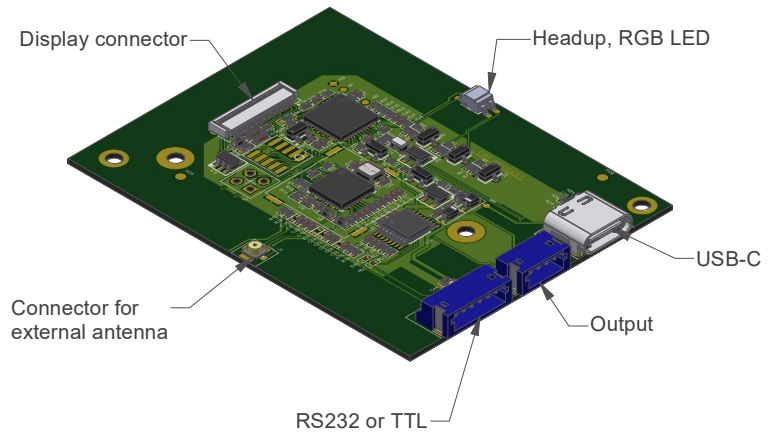
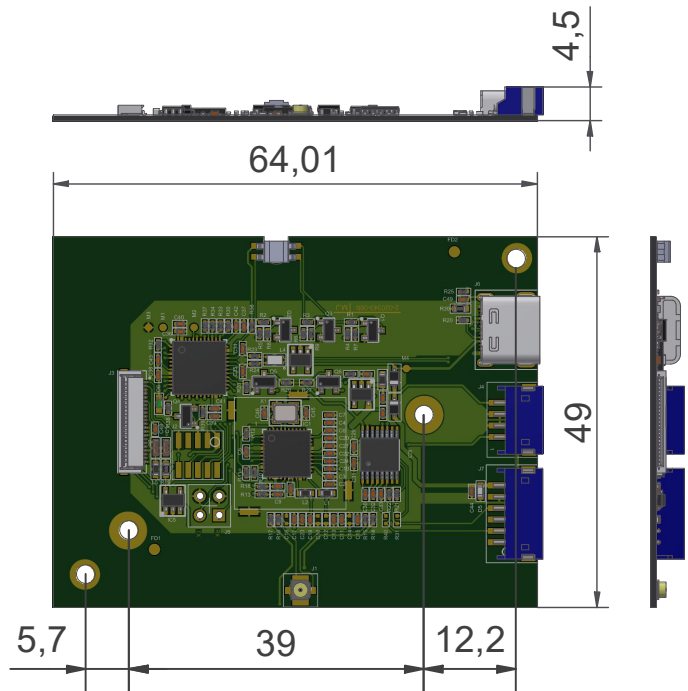
	35 x 35 x 5,6 mm
	49 x 64 x 4,5 mm

Mini



3,3V TTL
1,27mm, HRS-2KY-20-G-SMT

Compact



Display connector
Headup, RGB LED
USB-C
Output
RS232 or TTL
Connector for external antenna

Unit: mm
General tolerance ± 0.5

Abmessungen können je nach Ausführung variieren.
In den Abbildungen oben sind all konfigurierbaren
Optionen ausgewählt.

*The dimensions of the product can vary depending on your configuration.
In the drawings above, all features and all selectable options are
included.*

ELEKTRISCHE DATEN | ELECTRICAL DATA

ALLGEMEIN GENERAL	Stromverbrauch	100 mA	<i>Current consumption</i>
SCHNITTSTELLEN INTERFACES	Serielle TTL-Schnittstelle	3,3 V	<i>Serial TTL-Interface</i>
	RS232 Schnittstelle		<i>Serial RS232-Interface</i>
	USB Schnittstelle	5V	<i>USB-Interface</i>
RFID	Frequenz	13,56 MHz (HF)	<i>Frequency</i>
	Antenne	Internal or external; 50 Ohm	<i>Antenna</i>
OUTPUTS	Anzahl	2 3,3V, 100mA	<i>Number</i>

Prozessor | Processor (compact version only)

- latest processor generation
- Arm® Cortex®-M33
- low-power in Standby with RTC (370nA)
- 512-Kbyte flash memory
- 274-Kbyte SRAM
- Options for security applications
- Secure firmware upgrade
- 2 AES coprocessor
- Public key accelerator
- HASH hardware accelerator
- true random number generator
- 96-bit unique ID
- active tampers

NFC- Prozessor | NFC-Processor

- full NFC frontend
- dynamic Power Control
- Low-power card detection
- Zero-Power-Wake-Up

RFID PROTOKOLLE | RFID PROTOCOLS

ISO 14443 A	MIFARE Classic MIFARE Mini	MIFARE DESFire MIFARE DESFire Light	MIFARE Ultralight
ISO 14443 B		Calypso (2025)	
ISO 18092	NFC Forum NFC Peer-to-Peer	Sony FeliCa NFC Active and passive communication mode	
ISO 15693		iCODE	

SUPPORTED OPERATING SYSTEMS FOR TEST APPLICATION

Microsoft and Linux
ddm hopt+schuler Software (Device Portal)

UMGEBUNGSBEDINGUNGEN | ENVIRONMENTAL CONDITIONS

KLIMATISCHE BEDINGUNGEN CLIMATIC CONDITIONS	Lagertemperatur	- 30°C ... + 70°C	<i>Storage temperature</i>
	Betriebstemperatur	- 25°C ... + 65°C	<i>Operating temperature</i>
	Luftfeuchtigkeit	10 ... 100% relative Luftfeuchtigkeit, nicht kondensierend	<i>Humidity</i>
	Luftdruck	70 ... 106 kPa	<i>Air pressure</i>
MTBF	Stunden	500.000	<i>Hours</i>

Pos. 10 ANTENNENKABEL | ANTENNA CABLE

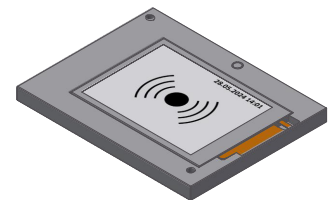
8 8 1 - 0 0 **10**

	Mini	Compact
0	without	without
1		15 cm
2		30 cm

Pos. 11 DISPLAY | DISPLAY

8 8 1 - 0 0 **11**

	Mini	Compact
0	without	without
1		TFT, 2", 240 x 320 DOTS, 550 cd/m ² , frame, light tube
2		TFT, 2", 240 x 320 DOTS, 550 cd/m ² , clued on PCB



1 = with Display, frame and light pipe

Pos. 12 GEHÄUSE | ENCLOSURE

8 8 1 - 0 0 **12**

0 without

Pos. 13 SOFTWARE | SOFTWARE

8 8 1 - 0 0 **13**

0 Standard

Pos. 14 KONFIGURATION | CONFIGURATION

8 8 1 - 0 0 **14**

0 Standard

Pos. 15 Processor | Processor

8 8 1 - 0 0 **15**

0 Standard

Anschrift | Address

Firma:
Company: _____

Datum:
Date: _____

Adresse:
Address: _____

Tel.:
Phone: _____

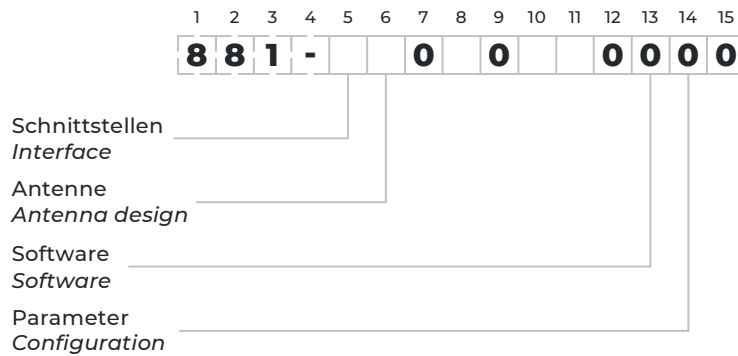
Name:
Name: _____

Fax:
Fax: _____

Kundennr.:
Customer No.: _____

E-Mail:
E-Mail: _____

Bestellschlüssel | ordering code



Muster und 3D-Daten | Samples and 3D Data

Bitte nutzen Sie die nebenstehenden Links und QR-Codes, um Ihre individuellen Muster und 3D-Daten anzufordern.

www.hopt-schuler.com

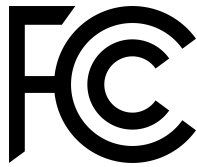


Please use the links and QR-codes beside to require your specific samples and 3D Data.

sales@hopt-schuler.com



FCC Specific FCC certification for certain configurations available. All readers are FCC compatible.



CE Conformité Européenne



RoHS/REACH

RoHS 3 + REACH conformity explanation

Hiermit bestätigen wir, dass das Produkt
Hereby we confirm that the product

keinerlei giftige Substanzen enthält, die in der RoHS II Directive 2011/65/EU
und in der REACH - Richtlinie (EC) Nr. 1907/2006 spezifiziert sind
*does not contain any substances, which are specified in the RoHS 3 Directive (EU) 2015/863
and in the REACH - Directive (EC) No. 1907/2006.*

Die RoHS II Directive 2011/65/EU - Konfirmität wird bestätigt!
Die REACH - Richtlinie (EC) Nr. 1907/2006 - Konformität wird bestätigt!
*The RoHS 3 Directive (EU) 2015/863 conformity is confirmed!
The REACH - Directive (EC) Nr. 1907/2006 conformity is confirmed!*

ISO 9001 Qualitätsmanagement

ISO 14001 Umweltmanagement