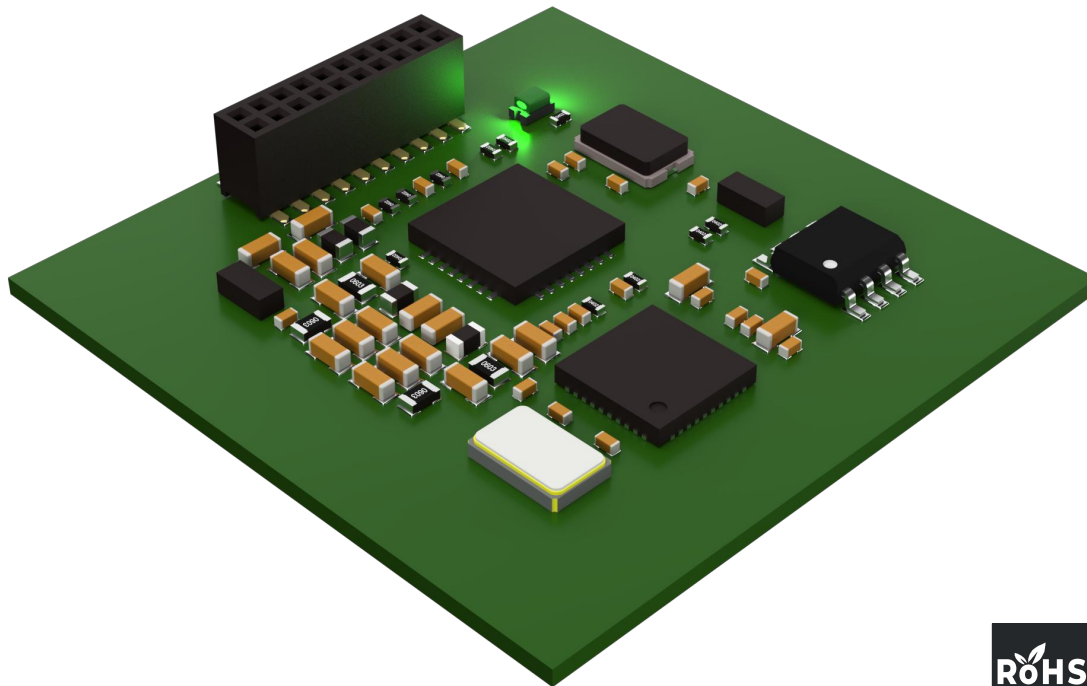


881 READER

ddm hopt+schuler GmbH&Co.KG

 Königsberger Straße 12
 78628 Rottweil | Germany

www.hopt-schuler.com

188

881

AUSFÜHRUNG

- + Low-power RFID/NFC-Leser
- + Unterstützt alle gängigen 13,57-MHz-Protokolle
- + Kompatibel zu allen ddm-Lesegeräten
- + Integrierte Antenne
- + Serielle TTL-Schnittstelle

CONSTRUCTION

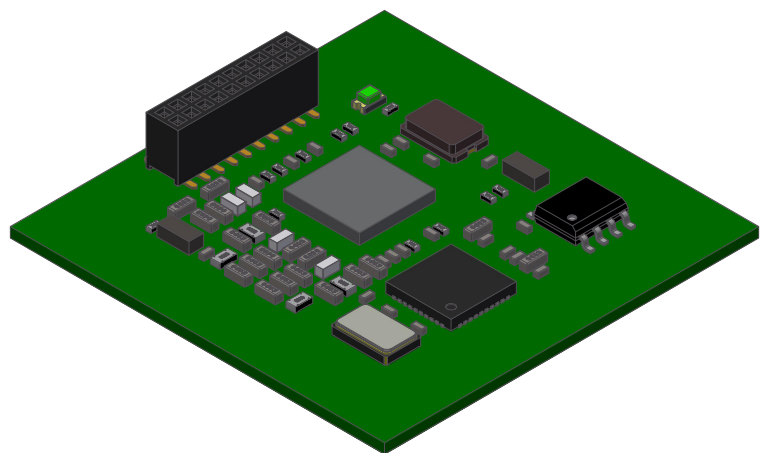
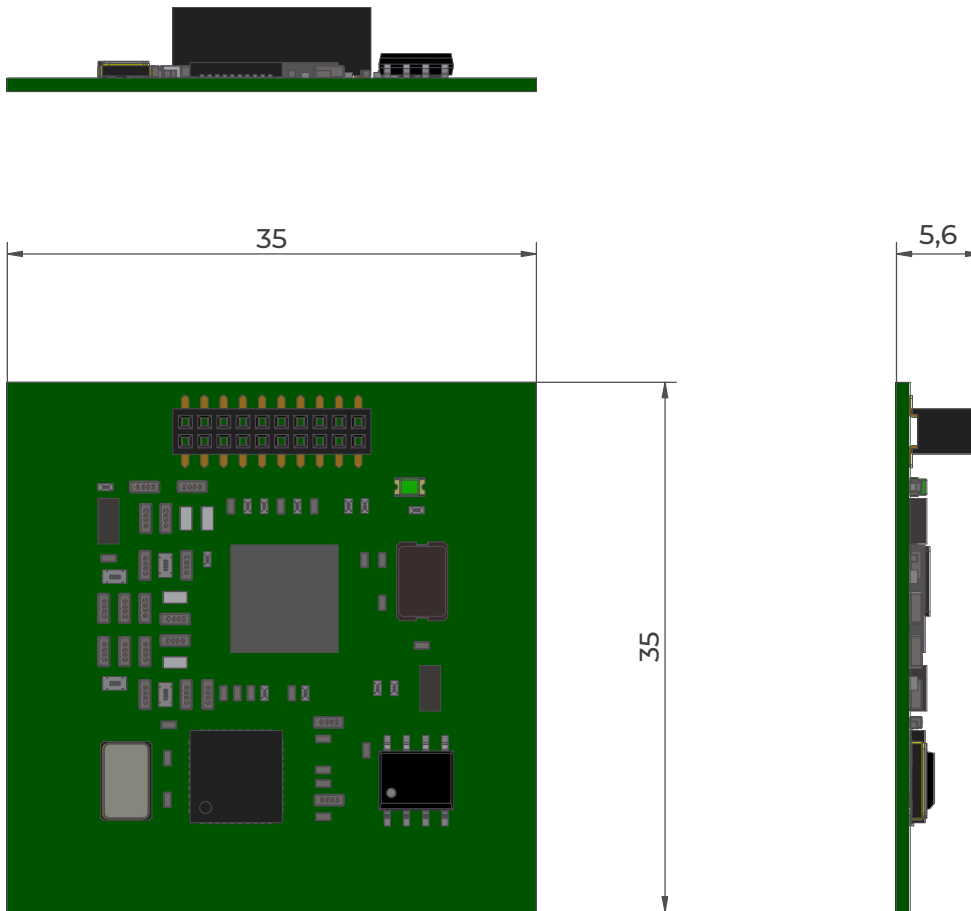
- + *Low-power RFID/NFC reader*
- + *Supports all common 13.57 MHz protocols*
- + *Compatible to all ddm devices*
- + *Integrated antenna*
- + *Serial TTL-Interface*

ABMESSUNGEN

35 x 35 x 5,6 mm

DIMENSIONS

35 x 35 x 5,6 mm



Unit: mm

General tolerance ± 0.5

Abmessungen können je nach Ausführung variieren.
In den Abbildungen oben sind all konfigurierbaren
Optionen ausgewählt.

*The dimensions of the product can vary depending on your configuration.
In the drawings above, all features and all selectable options are
included.*

ELEKTRISCHE DATEN | ELECTRICAL DATA

ALLGEMEIN GENERAL	Versorgungsspannung Stromverbrauch	3,3 V 100 mA	<i>Power requirements Current consumption</i>
SCHNITTSTELLEN INTERFACES	Spannung Serielle TTL-Schnittstelle	3,3 V	<i>Voltage Serial TTL-Interface</i>
RFID	Frequenz Antenne	13,56 MHz (HF) Interne und externe; 50 Ohm	<i>Frequency Antenna</i>

RFID PROTOKOLLE | RFID PROTOCOLS

ISO 14443 A	MIFARE Classic MIFARE Mini	MIFARE DESFire MIFARE DESFire Light	MIFARE Ultralight
ISO 14443 B		Calypso (Q4 2022)	
ISO 18092	NFC Forum NFC Peer-to-Peer	Sony FeliCa NFC Active and passive communication mode	
ISO 15693		iCODE	
SUPPORTED OPERATING SYSTEMS		Microsoft and Linux ddm hopt+schuler Software (Device Portal)	

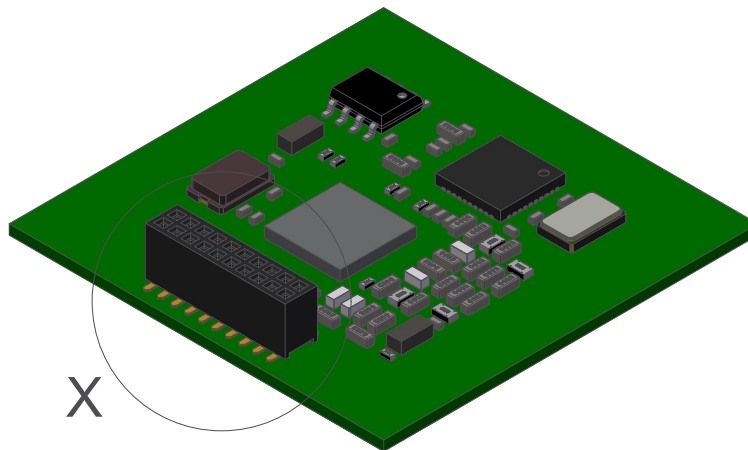
UMGEBUNGSBEDINGUNGEN | ENVIRONMENTAL CONDITIONS

KLIMATISCHE BEDINGUNGEN CLIMATIC CONDITIONS	Lagertemperatur Betriebstemperatur Luftfeuchtigkeit Luftdruck	- 30°C ... + 70°C - 30°C ... + 65°C 10 ... 100% relative Luftfeuchtigkeit, nicht kondensierend 70 ... 106 kPa	<i>Storage temperature Operating temperature Humidity Air pressure</i>
MTBF	Stunden	500.000	<i>Hours</i>

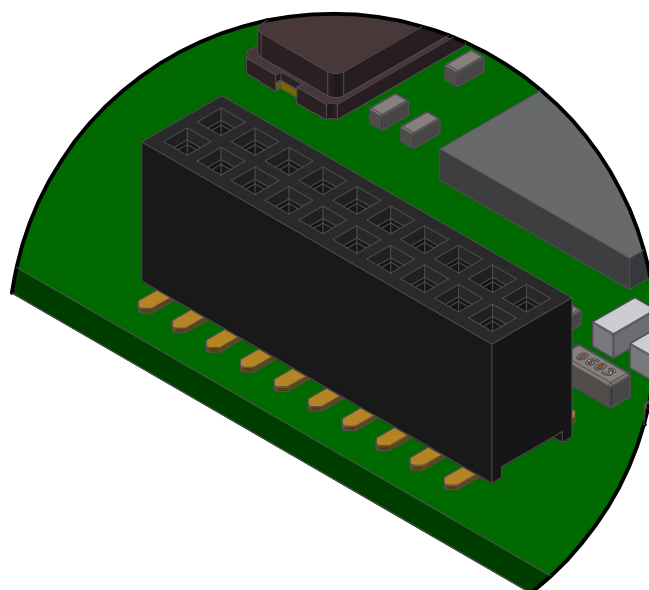
Pos. 5 SCHNITTSTELLE | INTERFACE



- 0 Serielle TTL-Schnittstelle 3,3V
Serial TTL-Interface 3.3V



X (5 : 1)



Pos. 6 ANTENNE | ANTENNA DESIGN

6

8	8	1	-	0	5														
---	---	---	---	---	---	--	--	--	--	--	--	--	--	--	--	--	--	--	--

5 Integrierte Antenne
integrated antenna

Pos. 13 SOFTWARE | SOFTWARE

13

8	8	1	-	0	5	0	0	0	0	0	0	0	0	0	0	0	0	0	0		
---	---	---	---	---	---	---	---	---	---	---	---	---	---	---	---	---	---	---	---	--	--

0 *Standard*

Pos. 14 PARAMETER | CONFIGURATION

14

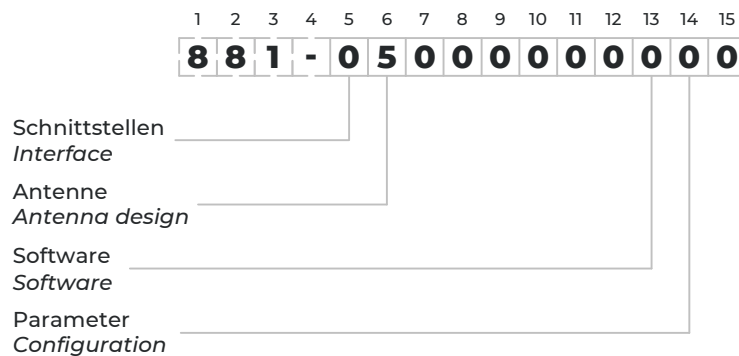
8	8	1	-	0	5	0	0	0	0	0	0	0	0	0	0	0	0	0	0	0	
---	---	---	---	---	---	---	---	---	---	---	---	---	---	---	---	---	---	---	---	---	--

0 *Standard*

Anschrift | Address

Firma: <i>Company:</i>	_____	Datum: <i>Date:</i>	_____
Adresse: <i>Address:</i>	_____	Tel.: <i>Phone:</i>	_____
Name: <i>Name:</i>	_____	Fax: <i>Fax:</i>	_____
Kundennr.: <i>Customer No.:</i>	_____	E-Mail: <i>E-Mail:</i>	_____

Bestellschlüssel | ordering code



Muster und 3D-Daten | Samples and 3D Data

Bitte nutzen Sie die nebenstehenden Links und QR-Codes, um Ihre individuellen Muster und 3D-Daten anzufordern.

www.hopt-schuler.com

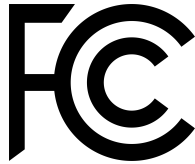


Please use the links and QR-codes beside to require your specific samples and 3D Data.

sales@hopt-schuler.com



FCC Specific FCC certification for certain configurations available. All readers are FCC compatible.



CE Conformité Européenne



RoHS/REACH

RoHS 3 + REACH conformity explanation

Hiermit bestätigen wir, dass das Produkt
Hereby we confirm that the product

keinerlei giftige Substanzen enthält, die in der RoHS II Directive 2011/65/EU
und in der REACH - Richtlinie (EC) Nr. 1907/2006 spezifiziert sind
*does not contain any substances, which are specified in the RoHS 3 Directive (EU) 2015/863
and in the REACH - Directive (EC) No. 1907/2006.*

Die RoHS II Directive 2011/65/EU - Konfirmität wird bestätigt!
Die REACH - Richtlinie (EC) Nr. 1907/2006 - Konformität wird bestätigt!
*The RoHS 3 Directive (EU) 2015/863 conformity is confirmed!
The REACH - Directive (EC) Nr. 1907/2006 conformity is confirmed!*

ISO 9001 Qualitätsmanagement

ISO 14001 Umweltmanagement